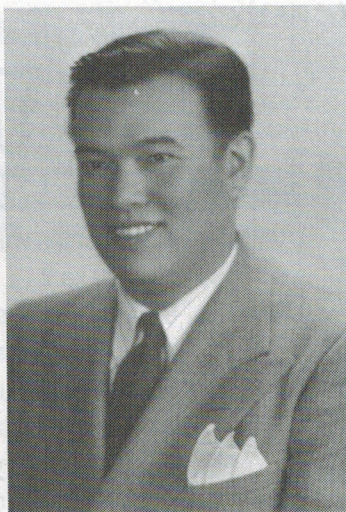
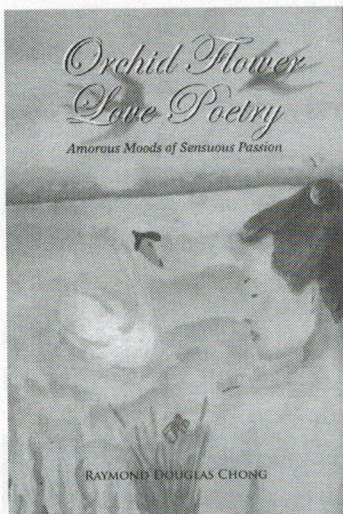


The ART of Sushi and Sake

Raymond Douglas Chong – Art of the Poet

by Nancy Uyemura



Raymond Chong has just come out with a captivating new anthology of love poems. *“Orchid Flower Love Poetry: Amorous Moods of Sensuous Passion”*. This book of love poetry covers ecstasy, angst, and caprice. In a unique and authentic way Raymond uses the beauty found in traditional Chinese motifs of the sensual and sensitive yearnings of the heart and the reader is enticed to intimately connect with the heart of the poet and you cannot help but be drawn into the passion of the amorous art of love.

“My love poems are a fusion in sentimental desire of American and Chinese cultures. They are meant to richly convey the intense senses of bouquet, sight, touch, sound, and taste, with sensuous intimacy. They reflect my Chong legacy in America and my Zhang ancestry in China with subliminal subtlety.”

(Chong had never composed poems, until a mystical day, Friday, May 8, 2009. Atop the “Hill of the Flying Swan” near “Dragon Village”, his ancestral village, in the City of Kaiping, in the great Pearl River Delta of Guangdong Province, China. His earthly psyche was forever transformed, when he honored 5 generations of Zhang (Chong) ancestors, in front of the crystal lake of the “Mountain of the Eight Immortals” in the “Land of Peace,” Kaiping. His heavenly ancestors rejoiced at his

return as a “fallen leaf” from “Gold Mountain” (America). Since that subliminal moment, he has composed over 700 poems, mostly about love.)

Raymond Douglas Chong (aka Zhang Weiming) is a man of many talents.

He is a fifth generation American Born Chinese (ABC) from California. His family was the owners of the Far East Café in the heart of Little Tokyo (Nihon-Machi) in Downtown Los Angeles. The Far East Café has been a landmark for the Nikkei community in the Southland, memories of eating Chop Suey in historic red wood booths and its iconic neon sign “Far East Chop Suey” are clearly etched in the hearts of four generations of Japanese Americans that grew up in Los Angeles.

From 1935 to 1994, the Far East Café was a unique place for weddings, birthdays, graduations, parties, and funerals. The “Chop Suey” joint served their popular China-Meshi dishes (Japanese version of Chop Suey). The Northridge Earthquake of ‘94 severely damaged the Far East Building and forced its closure until ‘06 when the new Chop Suey Café and Lounge had its grand opening and the Chop Suey Café opened with a lounge in front and The Far Bar in the back. (Chong has written a wonderful history of his family and the café **“The Far East Café: A Proud Legacy in**

Little Tokyo” for the Gum Saan Journal.)

Raymond is Principal for Generations, his creative enterprise, in Sugar Land, Texas. He is a writer of stories, composer of poems, and producer of films. His publications include *Gim Suey Chong: His Life from Hoyping to Gum Saan, Far East Café and China-Meshi, Far East Café Reunion: Memories and Nostalgia, A Nikkei Pioneer in the City of Roses: Hanhichi Wakiji, and My Family Values as a Nikkei in the Southland and My Kaiping Journey: From Gold Mountain to Hill of the Flying Swan, and Plum Blossom Love Poetry: Between Dragon Village and Gold Mountain.*

With his brother, Michael George Chong, he has produced a documentary film, *Gim Suey Chong and The Far East Café*. His next publication is *The Kubla Khan at The Gateway of Chinatown.*

He has a bachelor’s degree in Civil Engineering from the University of Southern

California and a master’s degree in Civil Engineering from San Jose State University. He has worked for various municipalities and consultancies in California and in Texas.

On December 4, 2010, A TV in Hong Kong, had broadcasted a documentary film, *Kaiping Diaolou – World Heritage Towers*. Raymond was featured as fallen leaf returning to Kaiping. At the

end, he recited *A Long-Lost Love* poem.

For more information, please contact him at raychong@prodigy.net (e-mail).

Orchid Flower Love Poetry: Amorous Moods of Sensuous Passion

by Raymond Douglas Chong
Orchid Flower Love Poetry is on sale at Amazon.com

My Enigmatic Lady Of Love

Once upon a time
In a remote place
In our secret garden
You and I were madly in love.

Your sensuous allure
Seduced and tempted
My ravenous heart
For your tangy heart.

Your carnal splendor
Devoured and savored
My voracious soul
For your silky flesh.

But slowly and gradually
You madly vexed me
With your moody love
In volatile ardor.

In so many ways
You always teased and tantalized me
Now, you are
My enigmatic lady of love.

Raymond Douglas Chong